

RIGEL

Technical Specifications | Teknik Özellikler

Body	: Electrostatic Powder Coated DKP Sheet Metal
Reflector	: Electrostatic Powder Coated
Light Source	: TL5 / TLD Fluorescent Lamp
Ballast	: Electronic Ballast
Input Voltage	: 220-240V AC 50/60Hz
Body Color	: Ral 9016
Usage	: Surface Mounted
IP	: IP20

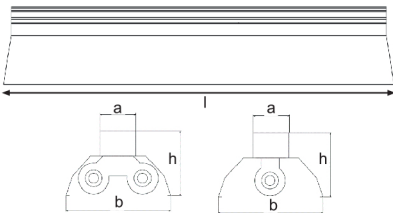
Gövde	: Elektrostatik Toz Boyalı DKP Sac
Reflektör	: Elektrostatik Toz Boyalı
Işık Kaynağı	: TL5 / TLD Floresan Lamba
Balast	: Elektronik Balast
Giriş Gerilimi	: 220-240V AC 50-60Hz
Gövde Rengi	: Ral 9016
Kullanım Şekli	: Sıva Üstü
IP	: IP20

Options | Opsiyonlar

Emergency Unit (1-3 Hour)

Acil Durum Kit'i (1-3 Saat)

Dimensions | Ölçüler



Product Chart | Ürün Tablosu

Product Code	Power	LAMP	a / b / h / l
SMF 162.114 ED	1X14W	TL5 FLUORESCENT	60x160x85x586
SMF 162.214 ED	2X14W	TL5 FLUORESCENT	60x160x85x586
SMF 162.154 ED	1X54W	TL5 FLUORESCENT	60x160x85x1186
SMF 162.254 ED	2X54W	TL5 FLUORESCENT	60x160x85x1186
SMF 162.180 ED	1X80W	TL5 FLUORESCENT	60x160x85x1486
SMF 162.280 ED	2X80W	TL5 FLUORESCENT	60x160x85x1486
SMF 162.118 ED	1X18W	TLD FLUORESCENT	60x160x85x636
SMF 162.218 ED	2X18W	TLD FLUORESCENT	60x160x85x636
SMF 162.136 ED	1X36W	TLD FLUORESCENT	60x160x85x1236
SMF 162.236 ED	2X36W	TLD FLUORESCENT	60x160x85x1236
SMF 162.158 ED	1X58W	TLD FLUORESCENT	60x160x85x1536
SMF 162.258 ED	2X58W	TLD FLUORESCENT	60x160x85x1536
SMF 162.114 ED L	1X8W	TL5 LED TUBE	60x160x85x586
SMF 162.214 ED L	2X8W	TL5 LED TUBE	60x160x85x586
SMF 162.154 ED L	1X26W	TL5 LED TUBE	60x160x85x1186
SMF 162.254 ED L	2X26W	TL5 LED TUBE	60x160x85x1186
SMF 162.180 ED L	1X26W	TL5 LED TUBE	60x160x85x1486
SMF 162.280 ED L	2X26W	TL5 LED TUBE	60x160x85x1486
SMF 162.118 ED L	1X9W	TLD LED TUBE	60x160x85x636
SMF 162.218 ED L	2X9W	TLD LED TUBE	60x160x85x636
SMF 162.136 ED L	1X18W	TLD LED TUBE	60x160x85x1236
SMF 162.236 ED L	2X18W	TLD LED TUBE	60x160x85x1236
SMF 162.158 ED L	1X24W	TLD LED TUBE	60x160x85x1536
SMF 162.258 ED L	2X24W	TLD LED TUBE	60x160x85x1536